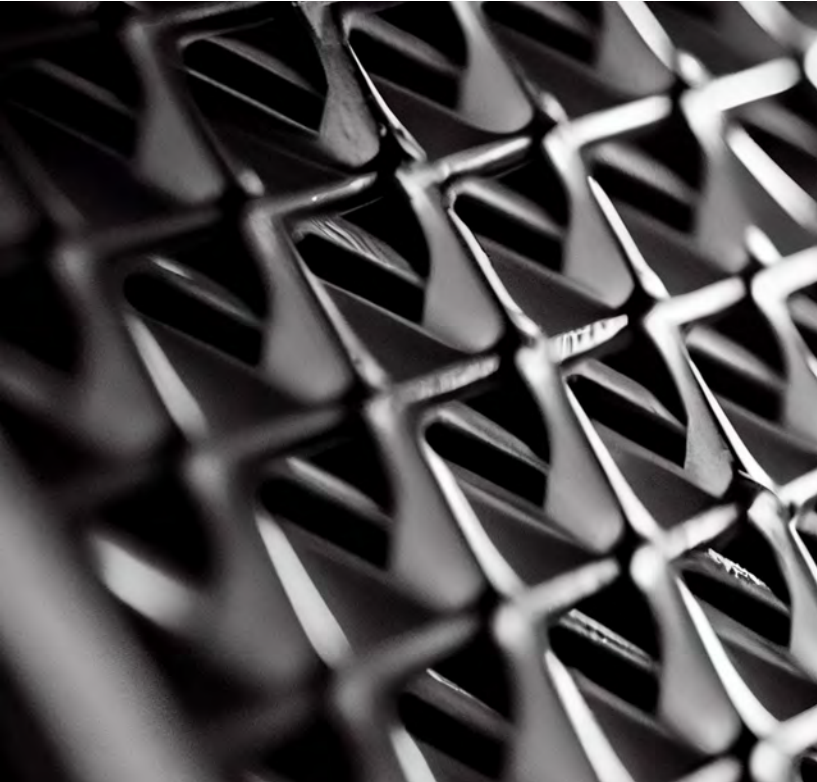


# screen max

## WIRE FOR AGGREGATE SCREENS



Screen Max is a cold drawn wire that serves as an alternative to oil tempered wire for usage in the aggregate screen market. The wire specifications have been established for crimping, weaving, and forming. Its ductility and uniformity from coil-to-coil results in superior forming properties, while its microstructure is ideal for impact resistance.

Screen Max is scale free and has no residual oils to gum machinery, produce fumes or create potential and environmental hazards. It imparts a surface condition which increases tool life and productivity.

The available size range is .047" to .750", and the chemistry varies within the specification shown in figure 1.

	C	Mn	P	S	Si
<b>Below .450"</b>	0.36/0.75	0.60/1.65	0.025 max	0.025 max	0.10/0.35

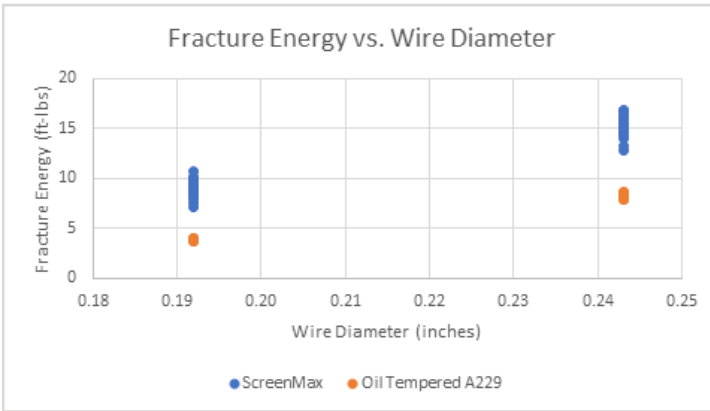
**Figure 1:** Chemical composition

Impact fracture tests have shown that Screen Max is greater at withstanding blunt forces than wire made to ASTM A229. The results show that it takes about twice as much energy to fracture Screen Max than it does to fracture oil tempered wire (figure 2). This difference can be partly explained by their different fracture surfaces (figure 4). Screen Max resists fracture even when wire has been damaged, while micro-photographs of oil tempered wire breaks indicate a tendency toward early brittle fracture. In addition, abrasion testing has also shown that Screen Max will match that of oil tempered wire. Figure 3 is showing that the amount of weight loss (per test method ASTM G65) is relatively equal between Screen Max and oil tempered wire.

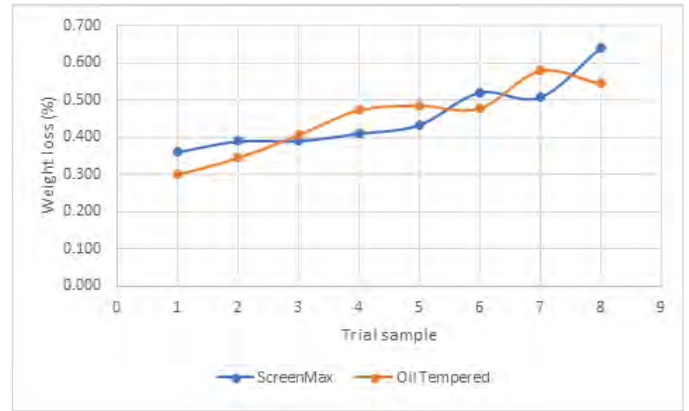
Screen Max is a wire material with a unique combination of strength, ductility, and resistance to abrasion, resulting in extended screen life in the field. The wire is engineered not only to endure but to excel, as well as designed with safety in mind.

# screen max

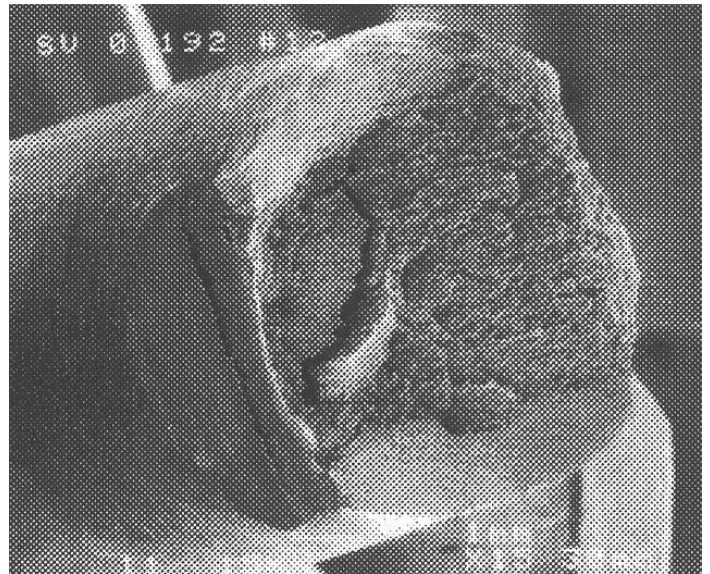
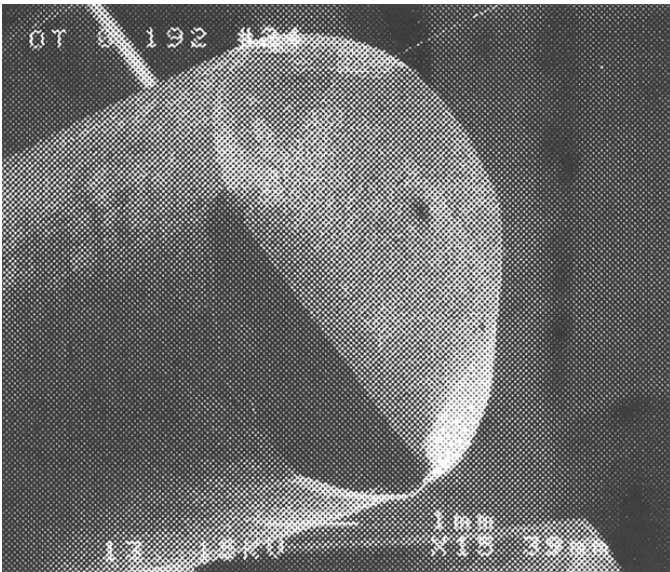
## WIRE FOR AGGREGATE SCREENS



**Figure 2:** Fracture energy versus wire diameter.



**Figure 3:** Weight loss using test method ASTM G65-91.



**Figure 4:** The left side shows the fracture of the oil tempered, while on the right side shows the Screen Max wire fracture surface.

*"The data contained herein has been derived from an independent testing laboratory. It is accurate to the best of our knowledge and is provided as general information only. Sivaco Wire Group gives no warranties as to the suitability of such data and limits its product warranties to those expressed in conditions of sale."*

Contact one of our representatives to try out this product.

1-800-361-2104 | [sivaco.com](http://sivaco.com)